



Ashlawn Builders Ltd
10 Main Street
Bilton
Rugby
CV22 7NB

T. 01788 55 00 22
E. info@ashlawnbuilders.co.uk

2 New Houses Cawston Lane Dunchurch, Rugby CV22 7RX



Preliminary Information

(Please note, this information will be periodically updated as the project progresses)



Ashlawn Builders Ltd
10 Main Street
Bilton
Rugby
CV22 7NB

T. 01788 55 00 22
E. info@ashlawnbuilders.co.uk

We are delighted to present an overview of our Cawston Lane Development, in Dunchurch, Rugby to be finalised Summer 2021 and valued at offers over £725,000

Our 4 bedroomed properties will be constructed to an exceptionally high specification complete with a **10 year Insurance Backed Warranty** and include:-

- ❖ Powder coated windows throughout
- ❖ Bi-folding doors to gardens
- ❖ Intruder alarms
- ❖ Solar Panelling installed on rear elevation
- ❖ Air Source Heat Pumps providing low maintenance, green heating to radiators, underfloor heating and water. (For additional information please request our data sheet)
- ❖ Under floor heating throughout the ground floor and first floor bathrooms
- ❖ Carpeting and Karndean flooring throughout
- ❖ Bespoke Anthracite designer radiators throughout
- ❖ Neff kitchen appliances, including Quoker boiler taps
- ❖ Bespoke kitchens with Quartz solid work surfaces
- ❖ Oak and glass staircases
- ❖ Ultra-clean burning multi-fuel stoves
- ❖ Bathrooms tiled throughout
- ❖ Fully automated garage doors
- ❖ BT ready
- ❖ home car charging points ready
- ❖ Patio and grassed areas complete

Should you wish to be placed on our mailing list, please do not hesitate to contact us either by phone on 01788 55 00 22 or via email to info@ashlawnbuilders.co.uk. Further details are available via our instagram and facebook pages, together with our blog and progress page at [“The Build Begins”](#)

Please keep an eye on these details as they will be periodically updated.



Ashlawn Builders Ltd
10 Main Street
Bilton
Rugby
CV22 7NB

T. 01788 55 00 22
E. info@ashlawnbuilders.co.uk

Plans



**Proposed Front
Elevation**

**Proposed Rear
Elevation**





Ashlawn Builders Ltd
10 Main Street
Bilton
Rugby
CV22 7NB

T. 01788 55 00 22
E. info@ashlawnbuilders.co.uk



**Proposed Side
Elevation**

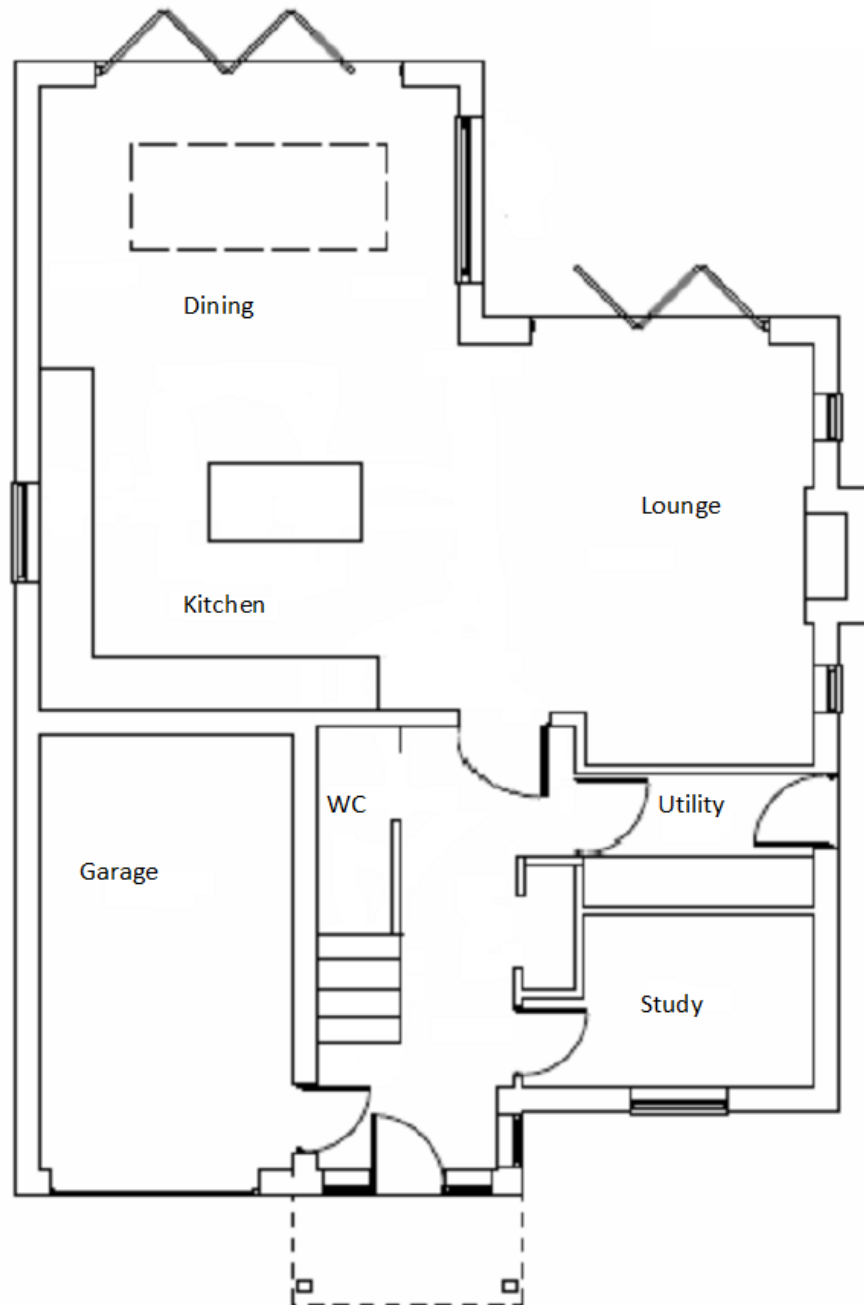
**Proposed Side
Elevation**





Ashlawn Builders Ltd
10 Main Street
Bilton
Rugby
CV22 7NB

T. 01788 55 00 22
E. info@ashlawnbuilders.co.uk



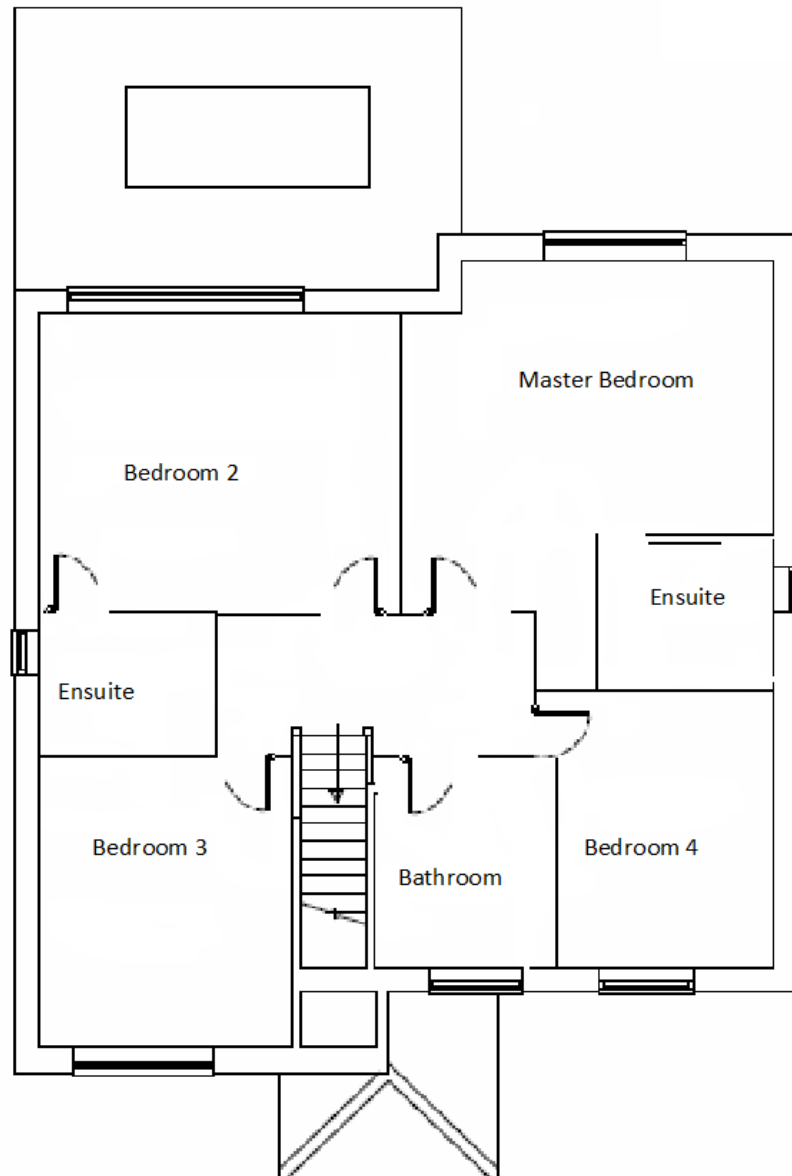
**Proposed Ground
Floor**



Ashlawn Builders Ltd
10 Main Street
Bilton
Rugby
CV22 7NB

T. 01788 55 00 22
E. info@ashlawnbuilders.co.uk

**Proposed First
Floor**





Ashlawn Builders Ltd
10 Main Street
Bilton
Rugby
CV22 7NB

T. 01788 55 00 22
E. info@ashlawnbuilders.co.uk

Kitchens / Utility Rooms



To view our gallery
please visit our [News Feed](#)



Ashlawn Builders Ltd
10 Main Street
Bilton
Rugby
CV22 7NB

T. 01788 55 00 22
E. info@ashlawnbuilders.co.uk





To view our gallery
please visit our [News Feed](#)

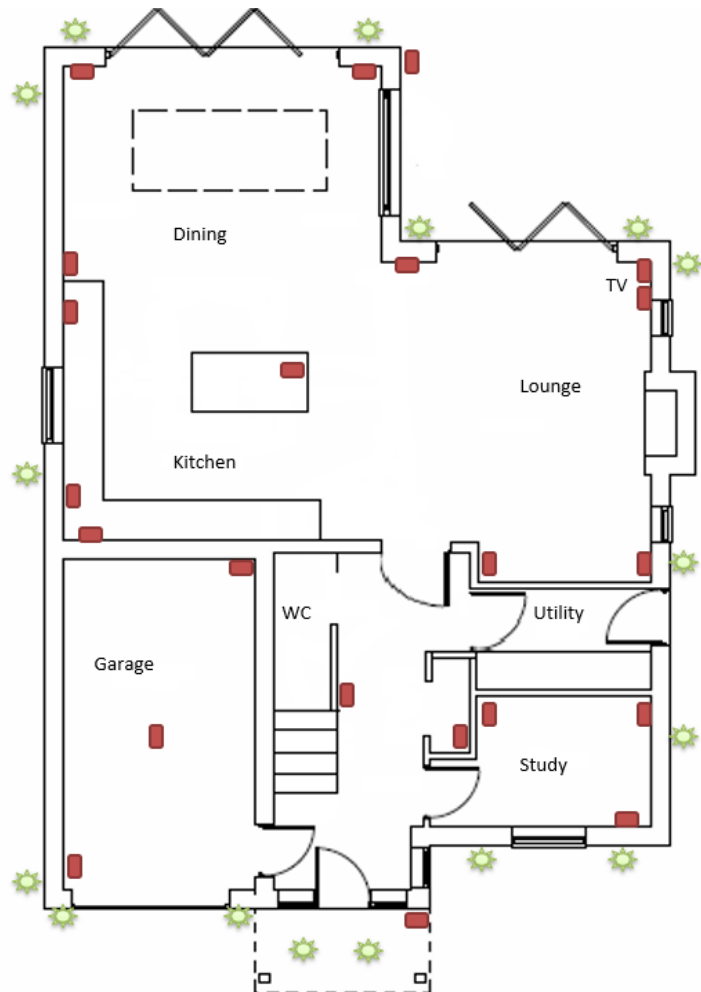


Ashlawn Builders Ltd
10 Main Street
Bilton
Rugby
CV22 7NB

T. 01788 55 00 22
E. info@ashlawnbuilders.co.uk

Electrics and Lighting

- ❖ Spots throughout ground floor
- ❖ CCTV as required
- ❖ Outside Lights 
- ❖ Ground Floor WC lights on sensor
- ❖ Porch soffit lights on sensor
- ❖ Double sockets 
- ❖ All ground floor sockets and switches in chrome
- ❖ Garage strip light
- ❖ LED to lantern
- ❖ Pendant centre of lounge
- ❖ Quooker Tap
- ❖ Carbon Monoxide detector as required
- ❖ Kitchen and utility points as per Kitchen spec

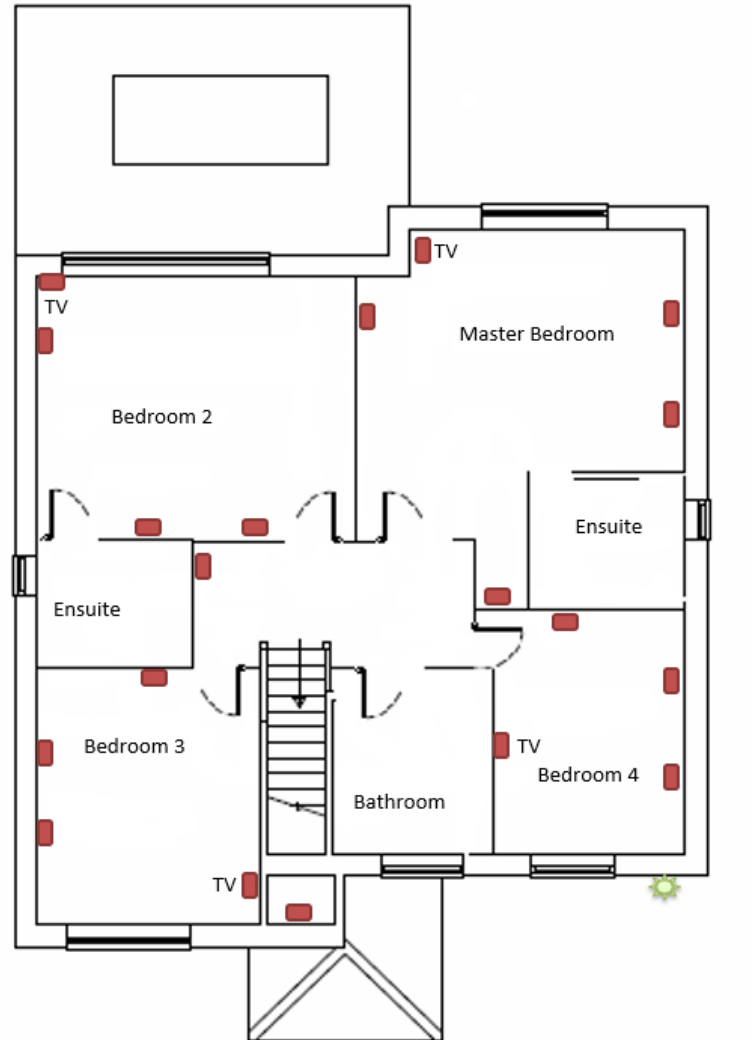




Ashlawn Builders Ltd
10 Main Street
Bilton
Rugby
CV22 7NB

T. 01788 55 00 22
E. info@ashlawnbuilders.co.uk

- ❖ Bedrooms 1 and 2 – spots and bed lamp points
- ❖ Bedrooms 3 and 4 – pendants
- ❖ Bathrooms – spots and mirror points
- ❖ Landing – spots
- ❖ TV aerials to all bedrooms





Ashlawn Builders Ltd
10 Main Street
Bilton
Rugby
CV22 7NB

T. 01788 55 00 22
E. info@ashlawnbuilders.co.uk

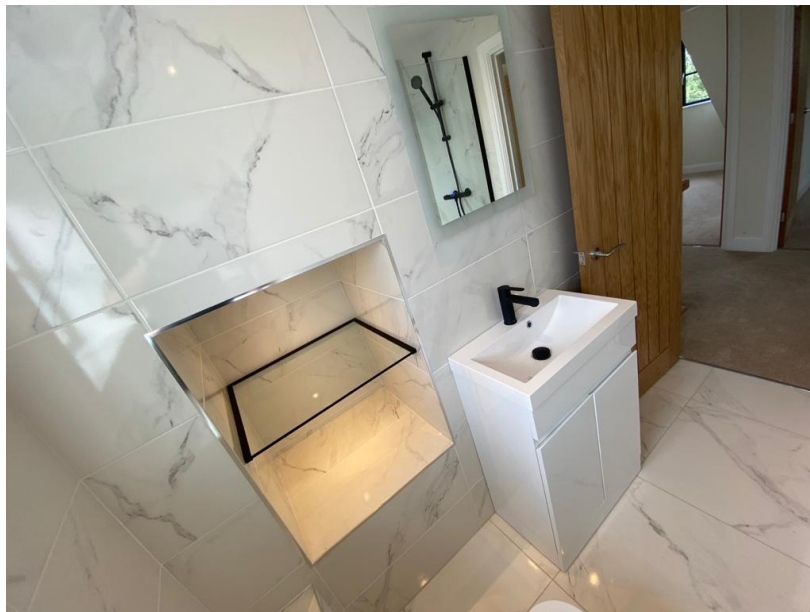
Bathrooms





Ashlawn Builders Ltd
10 Main Street
Bilton
Rugby
CV22 7NB

T. 01788 55 00 22
E. info@ashlawnbuilders.co.uk





Ashlawn Builders Ltd
10 Main Street
Bilton
Rugby
CV22 7NB

T. 01788 55 00 22
E. info@ashlawnbuilders.co.uk

General Photographs





Ashlawn Builders Ltd
10 Main Street
Bilton
Rugby
CV22 7NB

T. 01788 55 00 22
E. info@ashlawnbuilders.co.uk

